

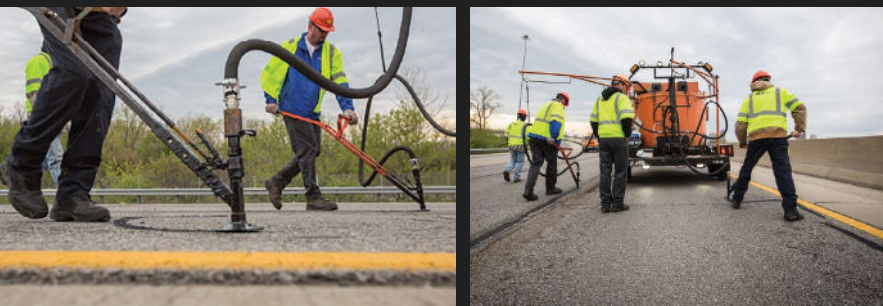
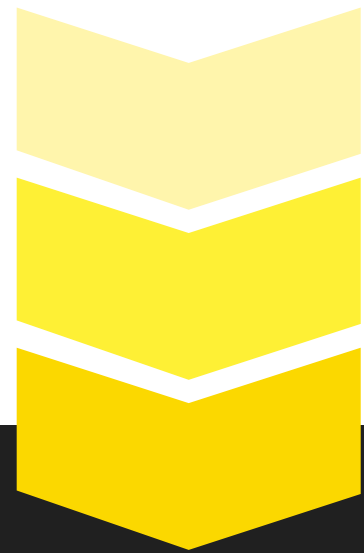
# OVERBAND CRACK SEAL

Overband Crack Seal is the most economical pavement maintenance tools for asphalt and concrete. The combination of asphalt cement and fibers produce a strong yet flexible seal that bonds well to crack walls. This is key to keeping water out of the pavement sub base which, in turn, will help provide long pavement service life.



## Benefits & Features

- ▶ Immediate return to traffic
- ▶ Waterproofs the existing crack
- ▶ Excellent ductility in cold temperatures
- ▶ Delays and minimizes reflective cracking
- ▶ Consistent quality application with high production
- ▶ Applied under pressure to completely fill and seal distresses



## Applications

- ▶ Concrete Construction Joints
- ▶ Random Cracking
- ▶ Reflective Cracking
- ▶ Longitudinal Cracking
- ▶ Transverse Cracking